



TECHNICAL DATASHEET

# Wood Finish Aluminium



# Wood Finish Aluminium

Providing the beautiful, natural look of timber whilst avoiding hassles such as fire compliance and maintenance schedules, our Wood Finish Aluminium battens offer value to specifiers, designers and clients alike.

A range of benefits over other wood-look alternatives, such as powder coating, wrapped aluminium provides far better fade resistance under UV exposure (see page 5 for details), a high quality textured finish, all while maintaining minimal environmental impact.

## Film Structure

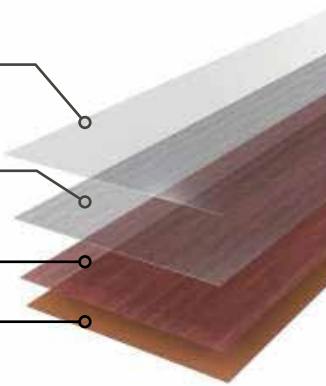
By applying a top coat with special cross-link structure, our Wood Finish aluminium provides superior weather and marring resistance. Polyolefin resin is used for the base of the film providing an environmentally friendly product.

EB Coating

Transparent embossed Olefin film

Printed layer (realistic wood design)

Olefin film base



## Suitable Applications

- Used for decorative wall and ceiling linings for internal and external applications
- Can be used as a finish with our Click-on Battens, Click-on Cladding and Click-on Screen systems in all profiles and sizes
- When Group 1 fire compliance is required for a project
- To minimise maintenance of an exterior project
- For large blade sizes, offering an lightweight alternative to timber

## Product Specifications

<b>Product Name</b>	Wood Finish Aluminium
<b>Material</b>	Polyolefin Exterior Film
<b>Country of Origin</b>	Japan
<b>Thickness</b>	0.15mm
<b>Glue</b>	Polyurethane Reactive (PUR) Hot Melt
<b>Pattern</b>	1200mm in length. A textured surface with a matt finish. Wood grain running the length of batten.
<b>Weather Resistance</b>	Tested under accelerated weather conditions in a S.W.O.M in accordance with JIS A1415 for 4000 hours. <b>No noticeable colour change or fading.</b> See page 5 for more information.
<b>Wear Resistance</b>	Taber Abrasion tester with 500g load of S-42 sandpaper after 100 cycles. <b>Printed layer is not affected.</b>
<b>Heat/Moisture Resistance</b>	Thermo-hygrostat at 60±2°C, 95±2%RH for 72 hours. <b>No noticeable change of surface.</b>
<b>Coefficient of thermal contraction (shrinkage)</b>	Vertical: less than 0.5% Horizontal: less than 0.5%
<b>Fire Ratings</b>	<p><a href="#">AS/NZS 3837-1998</a> In accordance with AS 5637.1-2015 Classification: <b>Group 1</b></p> <p><a href="#">AS/NZS 1530.3-1999</a> Determination of Ignitability, Flame Propagation, Heat Release and Smoke Release. <b>Spread of Flame Index: 0</b> <b>Ignitability Index: 11</b> <b>Heat Evolved Index: 1</b> <b>Smoke Developed Index: 4</b></p> <p><a href="#">AS 1530.1-1994</a> The material is <b>NOT deemed COMBUSTIBLE</b> according to the test criteria specified in Clause 3.4 of AS 1530.1-1994</p>
<b>Warranty</b>	10 year manufacturer's warranty

## Colour Options

Our range of wood finishes are custom designed to match the texture and colours of real timber. Product samples are available for accurate colour selection.



American Oak



Australian Ash



Charred Ash



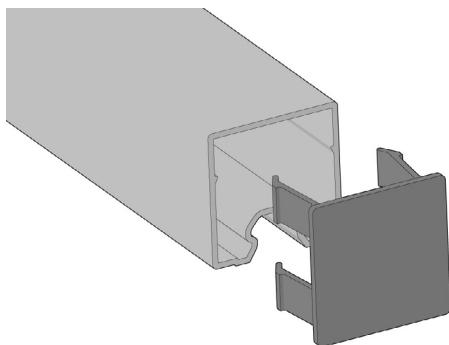
Coffs Blackbutt



Grey Gum



Northern Spotted  
Gum



## Batten End Caps

End caps are powder coated to match each individual wood finish colour. Can also be wrapped in Wood Finish.

## Maintenance and Cleaning

Surface dirt/dust, spider webs, bird droppings, rain spots and other debris, while not harmful can be unattractive and detract from the visual appeal of the battens. We recommend a visual inspection every 6-12 months. When used near coastal environments, an inspection every 3-6 months may be necessary to remove salt, visual deposits etc.

Please consider the following:

- When cleaning, a soft cloth or sponge can be used with a diluted neutral detergent or water. When using a neutral detergent, rinse thoroughly with water so that the detergent does not remain, and then wipe dry.
- Remove pebbles and sand adhering to the surface before cleaning.
- Do not rub with excessive force when cleaning.
- Do not clean with harsh chemicals other than organic solvents and neutral detergents,
- Do not clean with a abrasive methods such as a rotating brush, sandpaper, steel wool etc.
- Remove dirt as soon as possible.

## Scratch Resistance

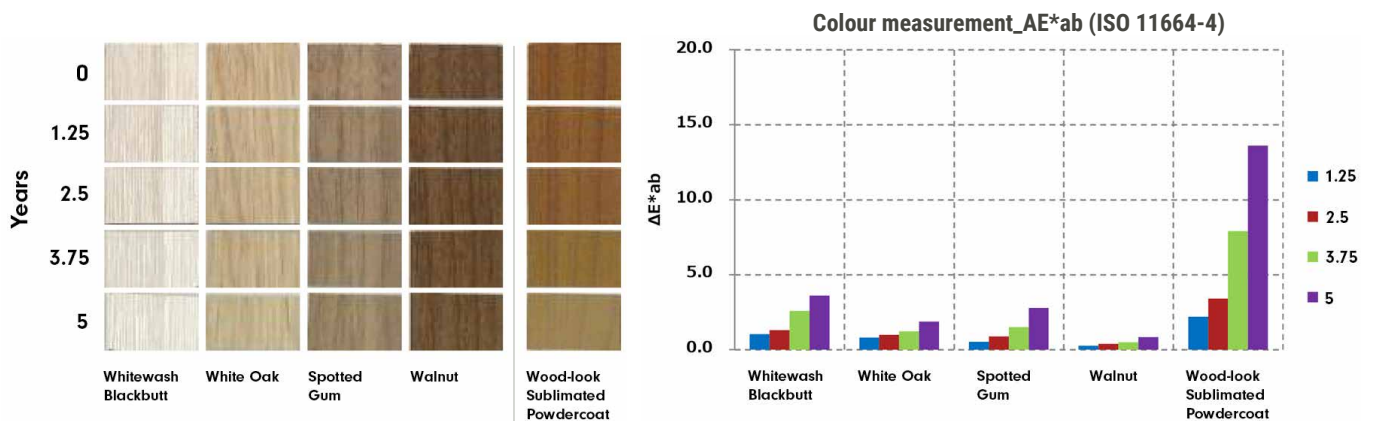
Hoffmann scratch test results indicate little to no marks on the Polyolefin Exterior Film after rigorous testing. Other Olefin sheets show significant marks when tested under the same conditions.



## Colour Fade Test Results

We have weather tested our Wood Finish Aluminium extensively, and they have proven to be **up to 3 times more resistant to fading than other timber-look aluminium products on the market.**

Fading was measured due to weather exposure over a 5 year period. These test results indicate the colour change in both our wood finish, and a powder coat wood look product.



## Environmental Impact

Our finishes are comprised of environmentally friendly materials and do not include PVC, Toulene or Xylene. Low VOC (Volatile Organic Compounds) emissions are generated in the process of manufacturing the finish, and in the wrapping process.

## Enquiries

For further information about our Wood Finish Aluminium or any other Sculptform product please visit [sculptform.com](https://sculptform.com) or email [support@sculptform.com](mailto:support@sculptform.com)