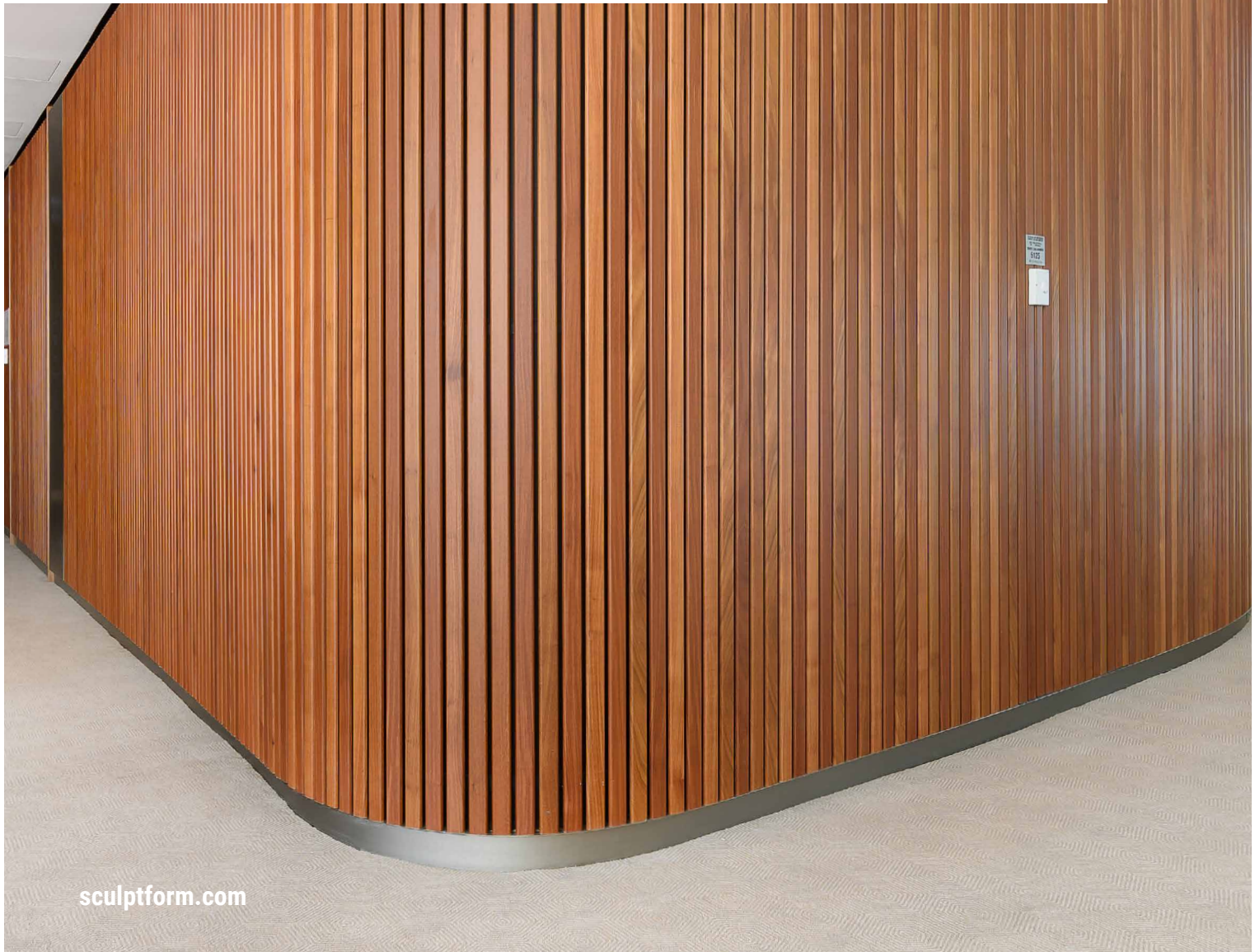


TECHNICAL DATASHEET

# Real Timber Veneer



# Real Timber Veneered Aluminium

Sculptform Real Timber Veneer combines the natural aesthetic of real timber with the strengths of aluminium to provide a compliant timber alternative for interior wall and ceiling linings. The thin slices of real timber are wrapped around aluminium batten profiles in our Australian factory, providing the natural variation that gives timber its visual appeal while still adhering to strict fire compliance requirements such as Group 1.



## Suitable Applications

- Used for decorative wall and ceiling linings for **internal only** applications.
- Can be used as a finish with our Aluminium Click-on Battens and Aluminium Click-on Cladding.
- When Group 1 fire compliance is required for a project.
- For large blade sizes, offering an lightweight alternative to timber.
- For the authentic look of timber but with all the benefits of aluminium.

## Product Specifications

<b>Product Name</b>	Real Timber Veneer
<b>Species</b>	Quercas Alba (White Oak) Juglans Nigra (Walnut)
<b>Country of Origin</b>	Australia
<b>Thickness</b>	0.27 +/- 0.01mm
<b>Glue</b>	Polyurethane reactive (PUR) hot melt
<b>Fleece Backing</b>	High quality non-woven fabric consisting of predominantly long fibered cellulose, applied with PVAc- glue (Polyvinyl Acetate)
<b>Coating</b>	Hydro-flex water-based lacquer with a premium UV top coat
<b>Tolerance</b>	Width: +/- 0.5mm Thickness: +/-0.1mm
<b>Fire Ratings</b>	<a href="#">AS/NZS 3837-1998</a> In accordance with AS 5637.1-2015 Classification: <b>Group 1</b>  <a href="#">AS 1530.1-1994</a> The material is <b>NOT deemed COMBUSTIBLE</b> according to the test criteria specified in Clause 3.4 of AS 1530.1-1994
<b>Warranty</b>	10 year manufacturer's warranty

## Environment

All raw materials are environment friendly, formaldehyde free and with low solvent content or solvent free. All wrapping veneer meets the E1 requirements.

## Colour Options

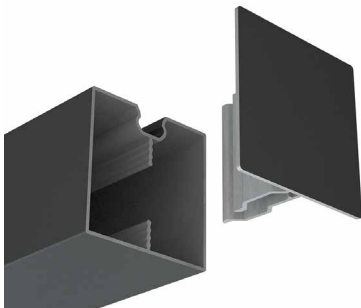
We have the following four options available for our Real Timber Veneer. Product samples are available for accurate colour selection.



White Oak



Walnut



### Batten End Caps

End caps are powder coated to match each individual timber veneer.

## Maintenance and Cleaning

We recommend a visual inspection every 6-12 months to keep your real timber veneer looking its best. Please consider the following when maintaining your timber veneer.

- Immediately wipe up any spills.
- Use a soft damp, lint-free cloth to remove dust/dirt particles etc. Wipe dry with a clean cloth in the direction of the grain.
- Do not rub with excessive force when cleaning.
- Do not clean with harsh chemicals. A quality cleaner for wood furniture can be used if required but a patch test should be carried out.
- Do not clean with abrasive methods such as a rotating brush, sandpaper, steel wool etc.

## Enquiries

For further information about our Real Timber Veneered Aluminium or any other Sculptform product please visit [sculptform.com](https://www.sculptform.com) or email [support@sculptform.com](mailto:support@sculptform.com)